

The Cambridge Community Gates

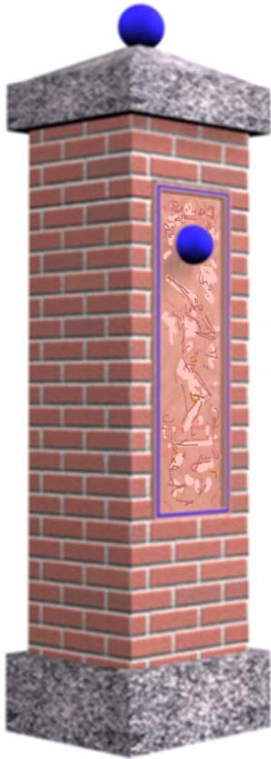
A sculpture proposal by

William C. Culbertson

Contents

Introduction	2
The Relief Plaques	3
Sculpture Elements & Installation	5
Art Investment	6
Developing a Design	7
Mini Portfolio of Similar Projects	
Ybor Medallions	8
Ames Circle of Arts	9
Tampa Centennial Keep	10
Shepard Building	11
Resume and Exhibition List	12

The Cambridge Community Gateways



As enhancements to the pre-existing column designs, this proposal will showcase the pride the community has in its heritage and culture. Through the integration of cast bronze relief sculptures and repetitive colored spheres, the Cambridge Community Gateways will welcome visitors of all ages to the field and park.



WILLIAM C. CULBERTSON
32 Warren Avenue
North Smithfield, RI 02896 USA
(401) 766-6256
www.sculpturelab.com

The Cambridge Community Gateways

The themes of the cast bronze relief sculpture plaques are intended to demonstrate pride of community for all to see. There will be three different plaque designs, each cast twice.



Relief design to be determined.
Not actual design. Please see:
“Developing a Design.”

Possible themes include local history, local historical features, or community diversity. Sport and play are other possibilities. As the sculptor, it will be my challenge to portray the desires of the committee as to the theme.

Once the themes are selected, I will research the subject, gathering visual imagery and information. The challenge then is to successfully organize the gathered information into a visual design that portrays the theme. Once the compositions are approved by the committee, the plaques will be modeled in clay, using graphic and sculptural relief to bring life to the designs.

The approved finished clays will then be molded and cast in bronze by *Kane Sculpture Studio* of Pawtucket, RI, an experienced bronze relief plaque foundry I have successfully worked with.

The Cambridge Community Gateways

The design for this proposal includes the possibility of uniquely identifying each gate through accent colors. “I’ll meet you at the ‘Blue Gate’ at noon!” could become a common comment use by children on their way to the park.. Additionally, the colors bring individuality to each gateway. Bronze relief coloration would be chosen to work harmoniously with the brick and granite work.



Above, the Blue Gateway, location “A” at the Southwest corner of the park.



The Green Gateway at location “C,” the East end of the park.



The Red Gateway at the South central side of the park, location “B.”

The Cambridge Community Gateways

Elements

Top Spheres: 6" diameter epoxy color coated steel with 1/2" pins.

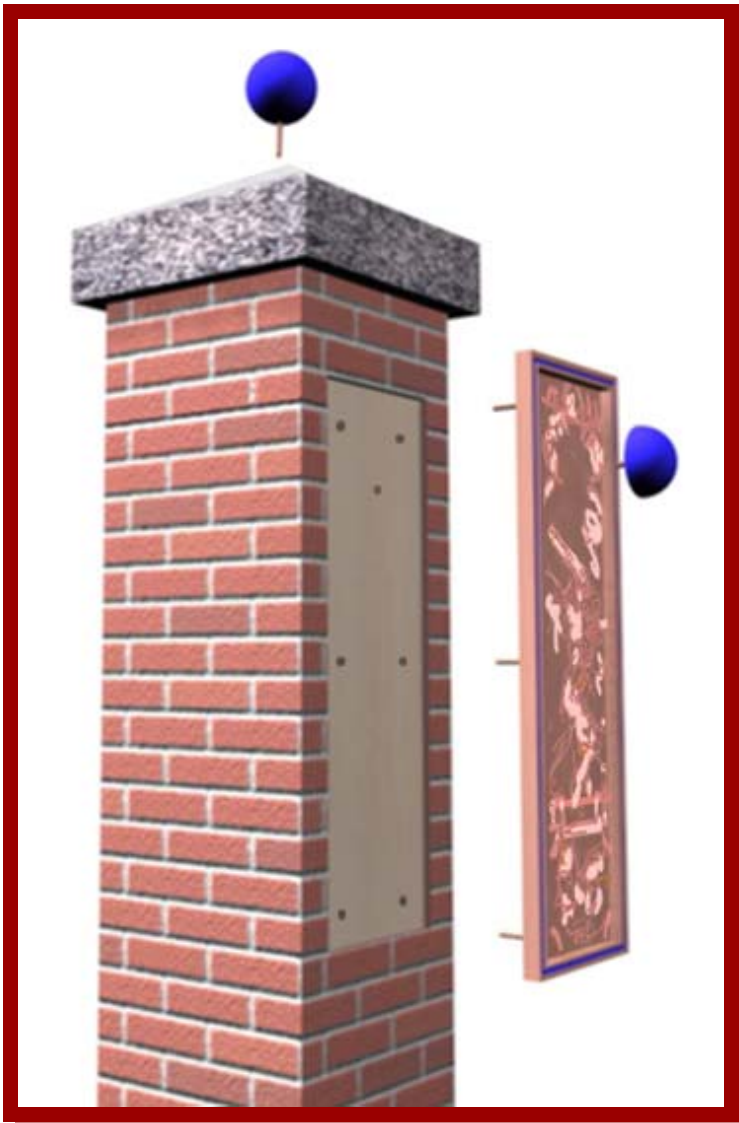
Hemispheres: 5" diameter epoxy color coated steel with 1/2" pins.

Plaques: 13" x 36" cast bronze 3/8" thick with mounting pins.

There will be three separate relief designs, each cast twice.

The castings can be mounted together in pairs at a gateway or mixed between different gateways, one plaque per brick column, mounted facing the street.

Note: additional 3" diameter spheres could be prepared for fence railing caps.



Exploded assembly views showing mounting pins on plaque, sphere and hemisphere. Pins on plaque and hemisphere are epoxy mounted in holes on recessed concrete frame of brickwork column. Sphere is epoxy mounted in mounting holes drilled in granite cap.

Relief design to be determined. Not actual design.

The Cambridge Community Gateways

Artwork Investment

Top Spheres, 6" diameter steel (quantity:6) \$500.
Includes welding of pins and epoxy paint coating.

Hemispheres, 5" diameter steel (quantity:6) \$250.
Includes welding of pins and epoxy paint coating.

Plaques: 13" x 36" cast bronze (quantity 6 @ \$1300.) \$7800.
Three different designs, each cast twice.
Includes rubber molds of clay work, casting and finishing.

Installation: \$800.
Includes epoxy setting of plaques in prepared locations.

Artist Fee: \$8650.
Includes research, design, modeling relief plaques.

Total: **\$18000.**

NOTE:

Proposal does not include garden brick border curbing or plantings. This proposal requires design modification to existing column design for plaque recess, pin mounting holes and top of granite caps to be cut flat for spheres.

The costs for these modifications are not included in this proposal.



Developing a Design

These images show the design development stages of the “Fine Arts” medallion (37” diameter) for the recently installed Ames Circle of Arts.



Preliminary presentation sketch. Not meant to indicate the actual design, it just indicates that a design will be developed, appropriate to the theme.



Researched and developed design, done after project is initiated. Presented to the committee for approval.

Finished clay sculpture ready for molding



Finished, installed bronze relief.



For more examples of preliminary to installed designs or examples of other work by William C. Culbertson, please visit:
www.sculpturelab.com

Ybor City Medallions



Currently in the process of being sculpted, these designs depict cultural aspects of historic Ybor City in Tampa, Florida. The medallions will be five feet in diameter. Eight castings will be made of each sculpture for installation on the new bridge embankments of Interstate 4 through Ybor.

Commissioned by the City of Tampa, 2004



WILLIAM C. CULBERTSON
32 Warren Avenue
North Smithfield, RI 02896 USA
(401) 766-6256
www.sculpturelab.com

AMES CIRCLE OF ARTS



Commissioned by the City of Ames, Iowa, the Circle of Arts monument pays homage to the arts. In the center of the monument is a bronze allegorical figure, "Creativity." The five bronze medallions in the arches are: Fine Arts, Musical Arts, Literary Arts, Theatrical Arts and Athletic Arts.

The arches are flanked by arced benches creating an interior circular space. The two sided medallions (36" diameter) permit viewing from inside or outside the monument space.

The monument is 23 feet in Diameter, 14 feet high. Design and sculpting by William C. Culbertson, bronze castings and finishing by Kane Sculpture Studio, Pawtucket, RI, precast concrete by Castcrete, Seekonk, MA, engineering by Jcorp, Ames, IA, installed Spring 2004.



WILLIAM C. CULBERTSON
 32 Warren Avenue
 North Smithfield, RI 02896 USA
 (401) 766-6256
www.sculpturelab.com

TAMPA UNION STATION

CENTENNIAL CLOCK KEEP

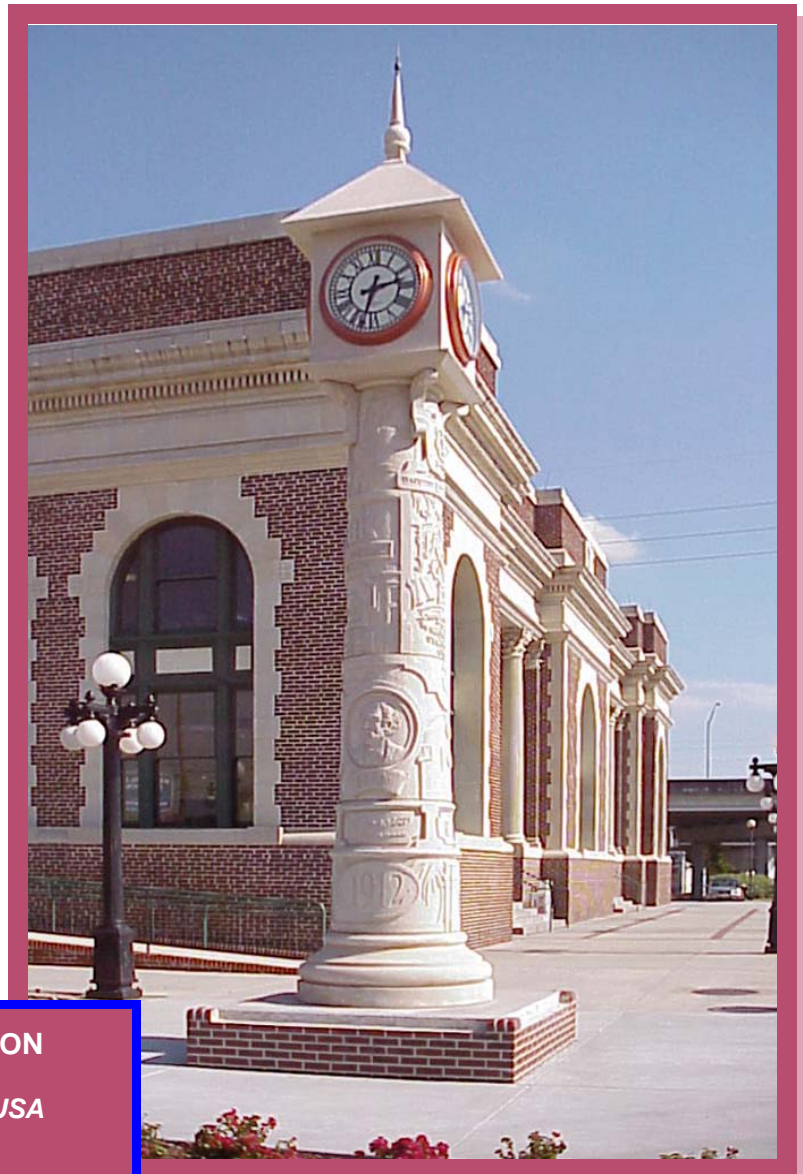
The Centennial Clock Keep, designed by sculptor William C. Culbertson for the City of Tampa for the newly renovated Tampa Union Station. The clock tower incorporates design elements from previous site structures, the current architecture and historical information into the design.

- Overall height : 28.'
- Four front lighted face clocks
by ElectricTime.
- Column is pre-cast concrete.
- Pedestal is cast concrete,
faced with brick.

For detailed images of sculpture patterns and pre-cast concrete development please visit sculpturelab.com.



Artist preliminary design.



WILLIAM C. CULBERTSON
32 Warren Avenue
North Smithfield, RI 02896 USA
(401) 766-6256
www.sculpturelab.com

THE SHEPARD COLUMNS



Designed and sculpted by William C. Culbertson, the Shepard Columns were created to visually depict the history of the Shepard Stores in Providence, Rhode Island. Commissioned by the Rhode Island State Council on the Arts, five columns were created, each depicting a twenty year time period from 1880 to 1973.

Advertisements from local news papers were incorporated into the design of the columns through the use of low relief modeling. The columns are internally lit with various colored neon lights that turn on and off randomly by a computer. Light shines through the cracks in the columns. The units were modeled in clay, moldes and cast in fiberglass. Each piece was then hand painted. Over three thousand individual parts went into the fabrication over a two year time period to create the sculptures.



WILLIAM C. CULBERTSON

32 Warren Avenue

North Smithfield, RI 02896 USA

(401) 766-6256

www.sculpturelab.com

Installed July 1999

William C. Culbertson

Sculpturelab, 32 Warren Avenue, North Smithfield, RI 02896 USA

culbertson@cox.net

401-766-6256

EXPERIENCE

- 1986 - Present **Sculptor / Designer**
Creating works of Fine Art for public and private commission in a variety of media.
Commissioned works include sculptures for municipalities, theme parks, cruise lines, architectural restoration, toy and amusement industries.
- 2002 -2003 **Visiting Lecturer, Rhode Island School of Design CE, RI; Framingham State College, MA**
Teaching various classes in animation, computer graphics and 3-D computer programs.
- 1984 -1986 **Design Director, Hasbro, Inc., Pawtucket, RI.**
Responsible for Research and Design Sculpture staff of thirteen. Including all aspects of managing projects and personnel, and corporate interactions.
- 1981-1984 **Senior Industrial Designer, Hasbro Industries, Inc.**
Responsible for design and execution of toy prototypes and production patterns in three-dimensional format and generation of new product concepts. Licensed characters worked on include Peanuts, Smurfs, Sesame Street, G.I. Joe, and My Little Pony.

EDUCATION

- 1981 **Master of Art Education, Rhode Island School of Design, Providence, RI.**
Thesis Concentration: Two-dimensional character design development and graphic art.
- 1978 **B.S. Degree, Towson State University, Towson, MD.**
Fine Arts Major (Studio Emphasis), Honors in Art.

RECENT AWARDS & EXHIBITIONS

- 2002 Commission for four monumental scale historical medallions depicting Ybor City, Tampa, Florida.
- 2003 Walt Disney Company commission for scale replica Animal Kingdom's "Tree of Life."
- 2001 Commission for large scale monument to the Arts, "Ames Circle of Arts," Ames, IA.
- 2000 Commission to design and execute a large scale sculptural clock tower for the newly renovated Tampa Union Station, Art in Public Places, City of Tampa, Florida
- 1998 Commission to design and execute a large scale sculpture for the Guilin Yu-Zi Paradise Sculpture Park at Dabu Town, Guilin, Peoples Republic of China .
- 1996 Commission for six large scale sculptures, Rhode Island State Council on the Arts, RI
- 1994 The John Singleton Copley Award, The Copley Society of Boston
- 1993 Commission for two large scale outdoor sculptures, Dallas Area Rapid Transit Authority, TX.
- 1991 "Time Works" - Two-person exhibition at the Copley Society of Boston.
- 1987 Distinguished Alumnus Award, The College of Fine Arts, Towson State University, Towson, MD.

Web Page: www.sculpturelab.com

William C. Culbertson

Sculpturelab, 32 Warren Avenue, North Smithfield, RI 02896 USA

culbertson@cox.net

401-766-6256

Recent Awards and Exhibitions

- 2003 Commission for four 5' diameter historical relief medallions depicting Ybor City, Interstate 4 Bridge Project, City of Tampa, Florida. *Juried*.
- 2003 Walt Disney Company commission for scale replica Animal Kingdom's "Tree of Life."
- 2001 Commission for large scale monument, *Ames Circle of Arts*, Ames, IA. *Juried*, \$75000.
- 2001 Appearance on WGBH's production of "This Old House" (show 2013) as concrete sculpture restoration specialist.
- 2000 Sculptural Clock Tower Commission, Tampa Union Station, Tampa, FL. *Juried* \$
- 2000 Architectural restoration of exterior details at Rock Cliff Mansion, Newport, RI
- 1999 Jim Henson Legacy Memorial Sculpture, University of Maryland, Commission for life size sculpture of Jim Henson and Kermit the Frog. *Finalist*
- 1999 Imperial Beach Sculpture Commission, San Diego, CA, *Invited Finalist* .
- 1999 Commission for fourteen Sesame Street Character sculptures for the Great Adventure Theme Park in San Paulo, SP, Brazil.
- 1999 Convergence XII, Providence, Rhode Island. Commission for creation and installation of four large scale outdoor sculptures, *Relics*, *Juried competition*.
- 1999 Attleboro Balfour Park Sculpture Commission, Attleboro, MA -*Finalist*
- 1998 Invitational commission to design and execute a large scale piece for the Guilin Yu-Zi paradise Sculpture Park, Guilin , Peoples Republic of China. The twenty-two foot tall sculpture, *Guilin Harmony* was installed December, 1998.
- 1998 Convergence XI, Providence, Rhode Island. Commission for creation and installation of three large scale outdoor sculptures, *River~Beacons*, *Juried competition*.
- 1997 Animal Kingdom Theme Park, Dino Institute attraction, Countdown to Extinction (Dinosaur!), Walt Disney World. Commission for six large relief sculptures.
- 1997 Just Kiddie Rides, Commission for three Sesame Street Ride-on vehicles and characters.
- 1997 Commission for sculpture of Sesame Street's "The Count" .Strong Museum, NY
Web Page: www.sculpturelab.com

William C. Culbertson

Sculpturelab, 32 Warren Avenue, North Smithfield, RI 02896 USA

culbertson@cox.net

401-766-6256

Recent Awards and Exhibitions (continued)

- 1997 Margaret Wise Brown Memorial Commission, Westerly Public Library, *Juried Finalist.*
- 1996 Commission for Shepard Building, Rhode Island State Council on the Arts, Providence, RI. Six sculptures featuring historical sculptural relief and neon lighting. *Juried*
- 1995 Royal Caribbean Cruise Lines, Norway, Commission for fourteen major works.
- 1995 Royal Caribbean Cruise Lines, Norway, Commission for ten, themed sculpture figures.
- 1994 The John Singleton Copley Award, The Copley Society of Boston, for Excellence in Art.
- 1994 Parque Plaza Sesame, Monterey, Mexico, Commission for twenty themed sculptures.
- 1993 Zambarano Hospital Art Project Commission, RISCA, Burrillville, RI, *Finalist.*
- 1993 20th International Dogwood Art Exhibition, Atlanta, GA, Juried Exhibition, *Award.*
- 1993 Clay & Fiber Exhibition, Octagon Center for the Arts, Ames, Iowa. *Juried.*
- 1993 Stuart Levy Fine Art Gallery, Group Show, CAN, New York, NY.
- 1993 Dallas Area Rapid Transit Authority, large scale sculpture commission, Garland, TX
- 1992 Out of Clay, Farrington-Keith Creative Arts Center, Dexter, MI. *Juried.*
- 1992 Anticipation '92, Chicago International New Art Forms Exposition, Chicago, IL, *Juried*
- 1992 Art Boston, Boston Park Plaza, Boston, MA, *Invitational Exhibition.*
- 1992 43rd Annual Art of the Northeast, Silvermine Guild Art Center, New Cannan, CT. *Juried.*
- 1992 Uihlein-Peters "Sculpture in the Plaza'92", National Juried Exhibition, Milwaukee, WI.
- 1991 Two Person Exhibition, The Copley Society of Boston, Newbury Street, Boston, MA.
- 1991 Accepted as a Member Artist of the Creative Artist Network, Philadelphia, PA. *Juried.*
- 1991 The North American Sculpture Exhibition, The Foothills Art Center, Golden, CO, *Juried.*
- 1991 City of Palm Desert Peace Memorial, Palm Desert, CA, *Juried Finalist.*
- 1991 The Copley Society, Boston, MA, *Juried, Award, conferred Copley Master.*

Web Page: www.sculpturelab.com